

Contact Information

ADD: He Yi Industry Park, Wuxing Industrial Zone, Oubei Town,
Yongjia County, Wenzhou City, Zhejiang, China

Tel: +86-577-66967292

Fax: +86-577-66967192

Cell: +86-158-6772-9999

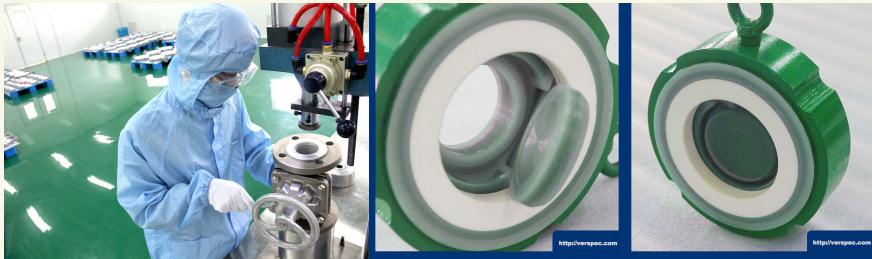
Web: <http://www.verspec.com>

E-mail: info@verspec.com

Skype ID: verspec



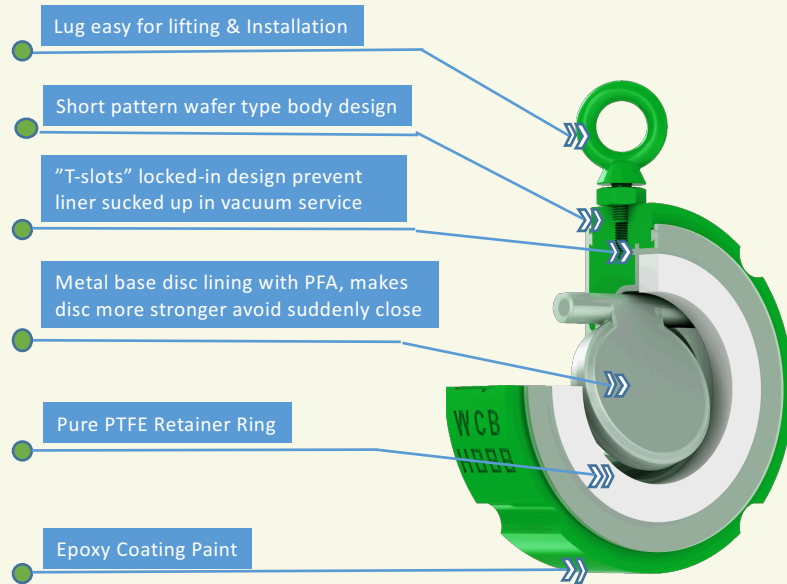
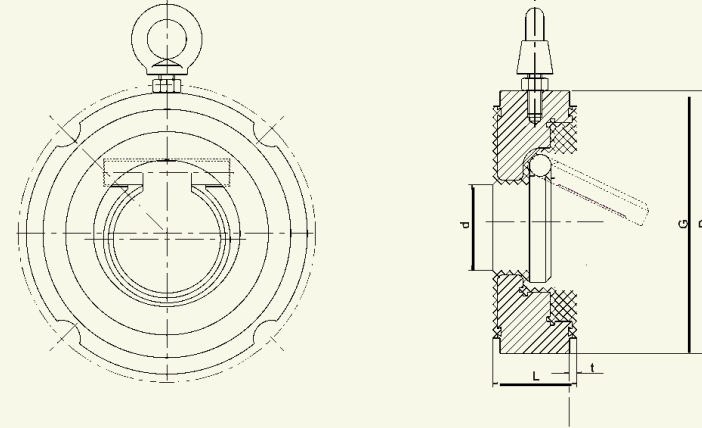
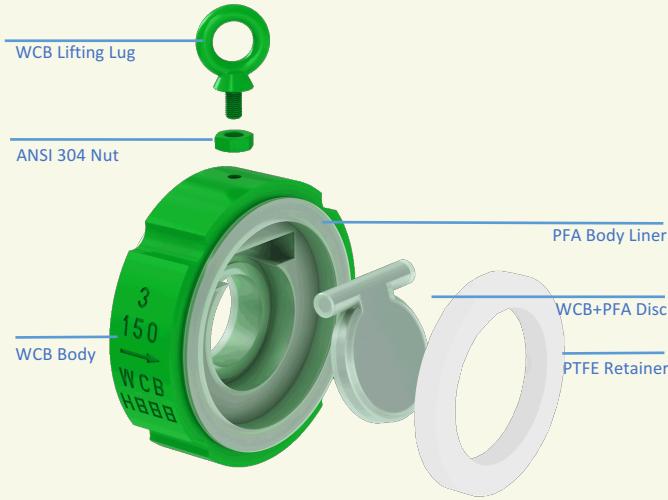
VLWSC Series PFA Lined Swing Check Valve



VerSpec Valve (Wenzhou) Co.,Ltd.

<http://www.verspec.com>

VLWSC Series PFA Lined Swing Check Valve



Specification

Design Standards	API 594
Available Body Material	WCB, CF8, CF8M, CI, DI
Liner thickness	> 3mm
Lining Material	PFA, PTFE, FEP, PO
Available Temperature	-20°C~200°C
Spark Test	14 KV
End Flange Drilling	ASME B16.5 DIN EN 1092 BS10 Table D

ASME B16.5 CLASS 150 Drilling Dimension Data

DN	NPS	L	D	d	G	t	Weight(Kg)
50	2"	43	112.4	30	92.1	3.5	2.7
65	2½"	46	131.2	55	104.8	3.5	3
80	3"	46	143.8	55	127	3.5	5
100	4"	52	181.7	72	157.2	3.5	6.8
150	6"	56	231.1	115	215.9	3.5	11
200	8"	60	288.1	155	269.9	3.5	19
250	10"	68	350.2	190	323.8	4	28
300	12"	78	419.9	240	381	4	39
350	14"	92	462.9	275	412.8	4	65
400	16"	102	526.4	305	469.9	4.5	90
450	18"	114	562.5	355	533.4	4.5	104.8
500	20"	127	619.6	405	584.2	4.5	165
600	24"	154	732.4	450	692.2	4.5	255

Note: Data "Weight" is only for reference